



Shrine Church of Ss Peter & Paul and St Philomena

New Lighting & Chandeliers

for the Dome of Home

Winter will be dark without your help!

Dear friends and benefactors,

Our project to restore the main sanctuary roof, dome and drum has been completed successfully. The church has been decorated in a colour similar to the original 1930s scheme to match the beautiful marble on the main altar. This was largely and providentially funded by a single private donor. *Deo gratias!* The contractor will begin to remove the scaffolding at the end of September.



Redecorated ceiling of the Nave

As you know, the Institute relies on Divine Providence in our undertakings, and to date we have not been disappointed. Many good people have responded to His inspiration to help, so thank you, everyone for your time, prayers, patience and financial donations.

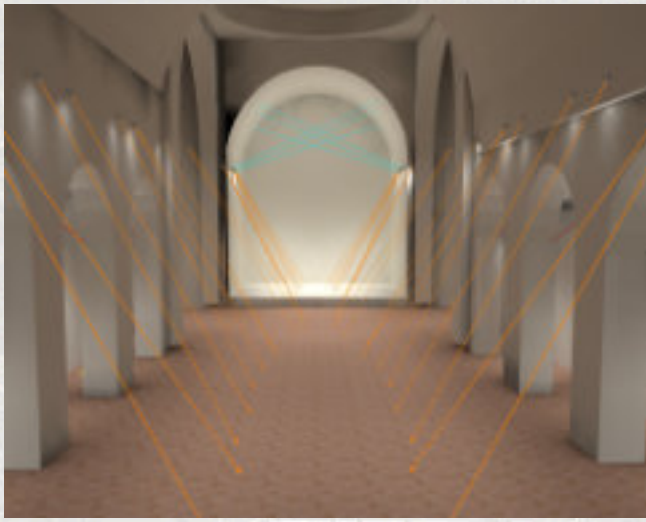


Outside the Sacristy: repointed brickworks and windows currently being restored

However, during these projects, we realised that to make this church fitting for Our Lord, it was imperative to commission several additional work.

Repair the Sacristy

The windows were rotten and roof leaking. This work was **urgent**, so we **instructed the architect and contractor to proceed immediately**, but we still need **extra funds to pay for this**.



Professional view of the new lightning design for the church

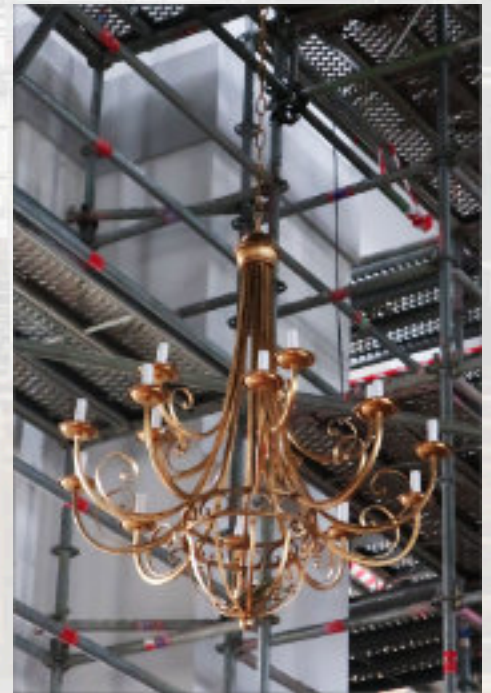
Lighting replacement

We must now replace the old, orange lights in the nave and Sanctuary for new lights that are unobtrusive, economical, easy to control and compliment the new decor. The contractor discovered many of the existing lights were broken when he inspected from the scaffold. These fittings can't be reinstalled **so, unless we want a dark winter, we don't have much choice but to press on. We have only a few weeks left with the 'bird-cage' internal scaffold, so we can save money on the**

installation, if we can raise funds quickly. Our Lighting Designer recommended that the failing lighting installation be replaced with 52 LED floodlights that are dimmable and provide better glare control and better colour rendition. This is not cheap and unexpected. **We need your help!**

New chandeliers fittings for the Nave

Have you seen the beautiful sample Chandelier hanging from the scaffold? Such lighting fixture would really enhance our very bare nave, more in keeping with its original Italianate design. This bespoke design in the picture opposite, is made of wrought iron, electrified with 15 LED lights on 2 tiers in an Antique gold finish, manufactured by a company in the South of France. The LMS have very kindly donated £10,000 towards this exciting enhancement. **But we still need more funds to buy three more!**



New chandelier for the Nave

National Lottery Heritage Fund has already funded the restoration of roofs and windows of the church for approximately £1.2 million but they won't fund any decoration or lights. We will be contacting our previous funders such as AllChurchesTrust and National Churches Trust for help, but these applications take a long time to complete, and success is not guaranteed.

We rely on your generosity for this last but important phase to give glory to Our Blessed Lord!

Thank you and God bless you all.

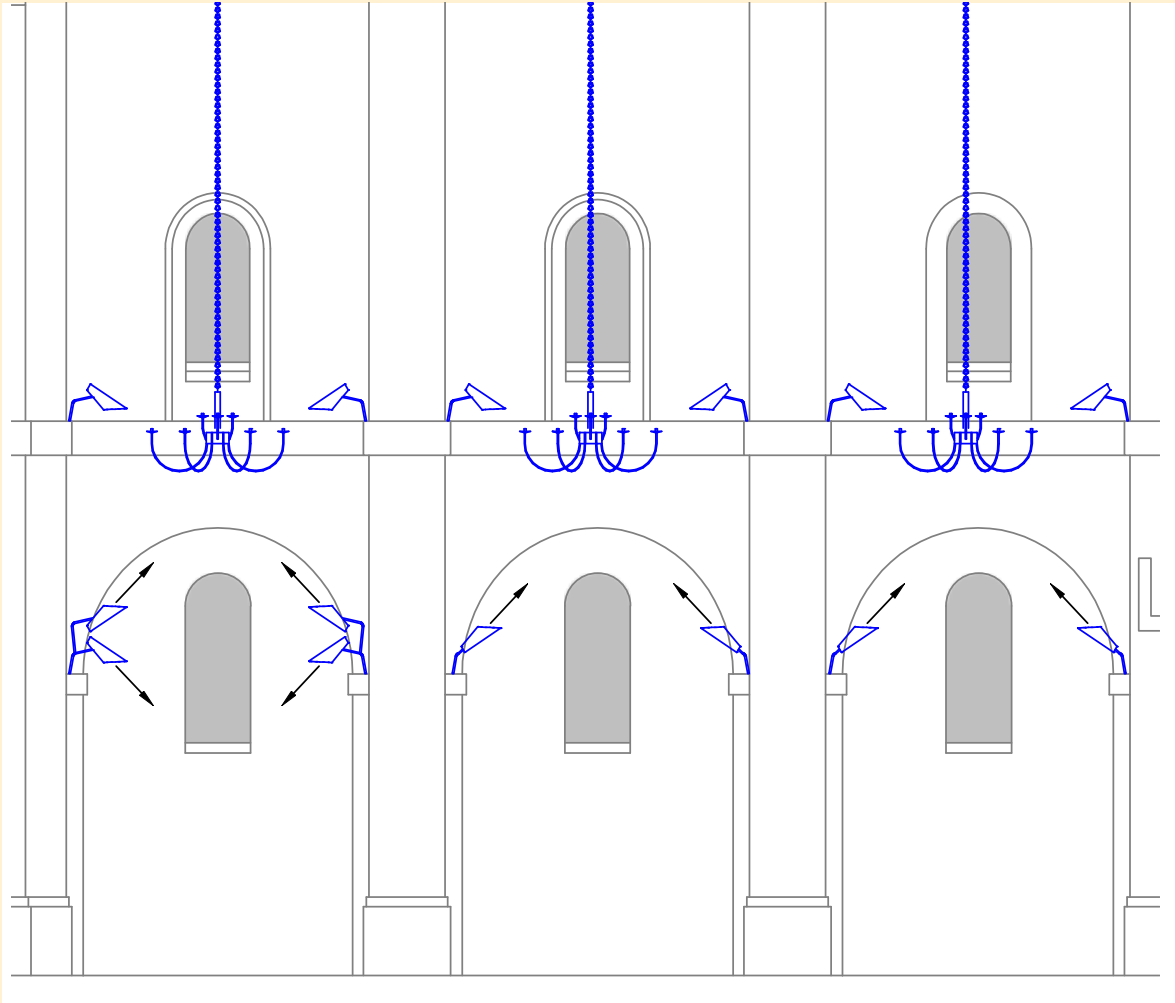


Canon Montjean

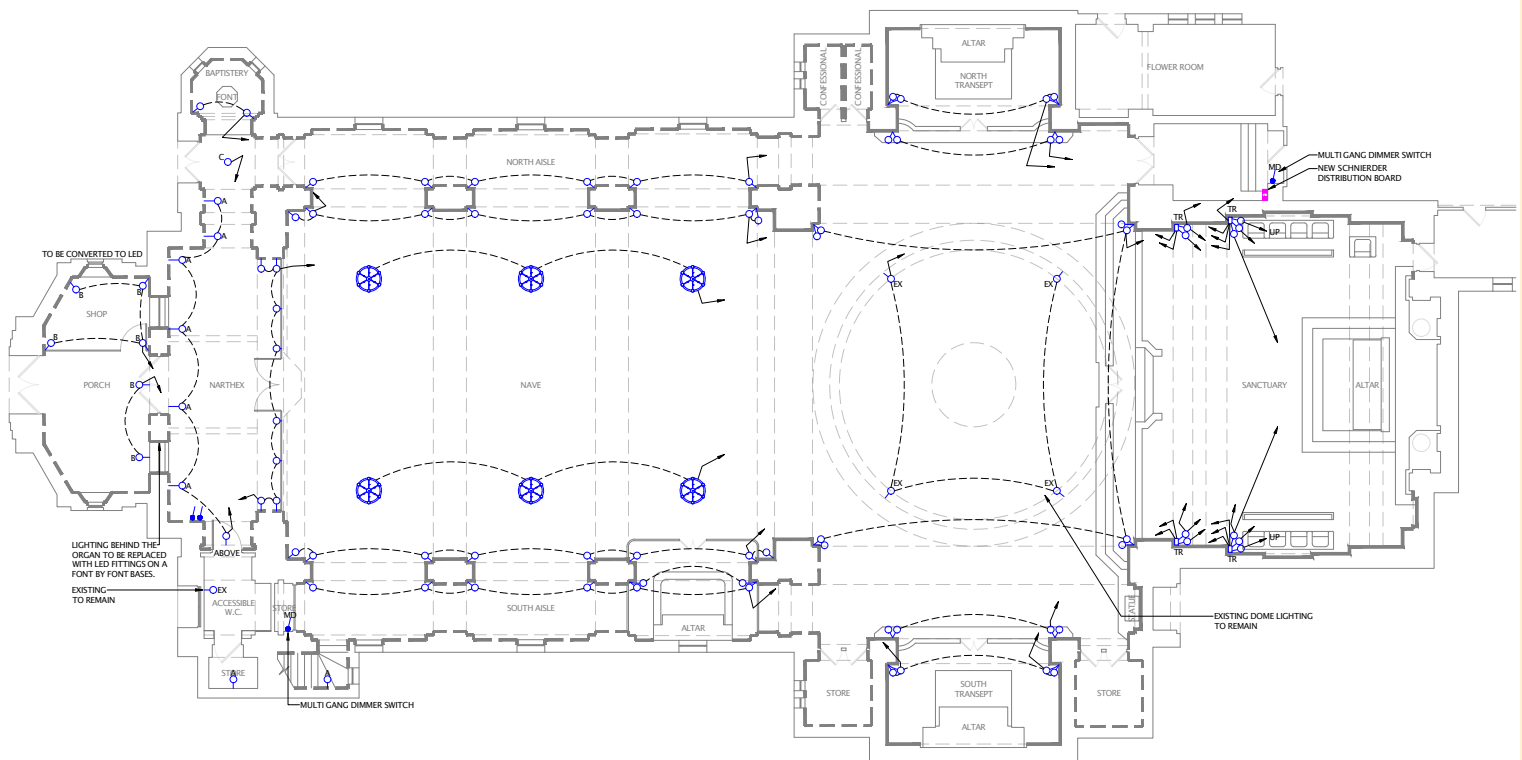


Canon Poucin de Wouilt

Position of the light fittings and chandeliers in the Nave



Profile view



General blue print of the church. Each ⊗ shows where the 6 chandeliers will be placed.



Drum and Sanctuary roof: restoration is now completed. Thank you!

Cost for the lighting project and the Sacristy

Sacristy works	£ 13,000
Lighting designing & electrical fitting	£ 18,000
Illuma LED lights fittings	£ 9,000
6 chandeliers for the Nave	£ 21,000
Total	£ 61,000
Already funded	£ 10,000
Total needed	£ 51,000

In your charity, please consider making a donation towards the lighting, using please use the donation/Gift Aid form enclosed.

Even small donations count!

If you would like to lend some money to the church please contact Canon Montjean directly:
07 97 212 80 97.

Thank you very much for your help!

The Dome of Home is supported by



ALL CHURCHES TRUST LIMITED
CHURCH HOUSE, 100, BROADWAY, LONDON, E1C 1DT

