

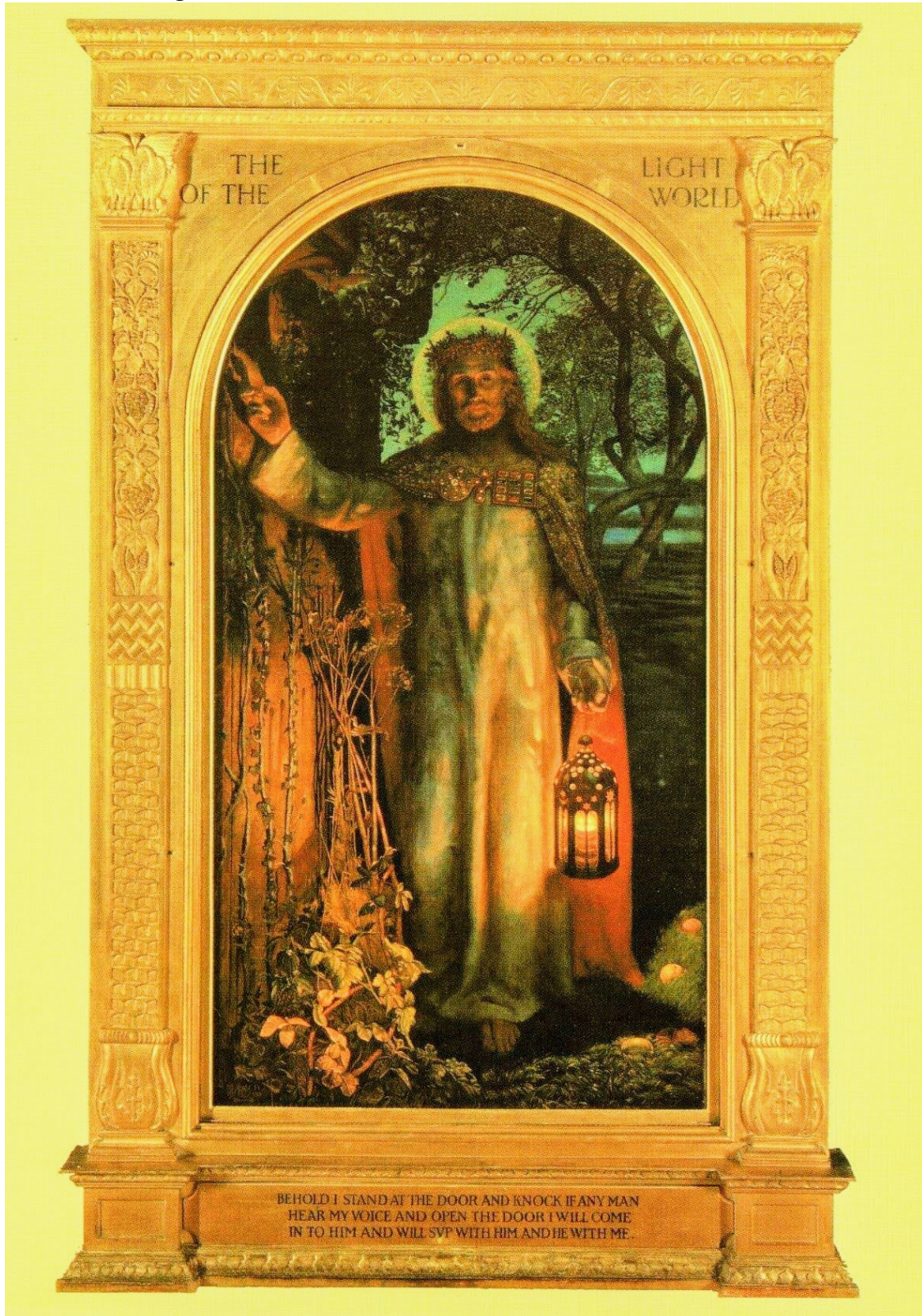


INSTITUTE OF CHRIST THE KING
SOVEREIGN PRIEST
In the Diocese of Plymouth

First Sunday of Advent.

27th of November 2022

‘The Light of the world’. (William Holman Hunt: 1827-1910)



(Oil on canvas. 49.8cm x 26.1cm. Third edition, St Paul's, London).

The Pre-Raphaelite brotherhood were an early nineteenth Century art group, consisting originally of eight artists, including Hunt, who sort to produce art with a more abundant and intense colour, breaking away from the Academies of that time, which had adapted a more mechanical form of art.

The 'Light of the world' situated in St Paul's Cathedral was a third edition. The painting is dedicated to a line in St Johns Gospel:

"I am the light of the world. He that followeth me, walketh not in darkness, but shall have the light of life".
(John 8:12)

The viewers first impressions of the painting will be of a large and beautifully framed oil on canvas. Christ is in the centre of an autumnal, winter scene. Jesus is identified firstly by the halo situated around his head and the crown of thorns. The jeweled cope and priestly garments identify Christ after his passion and resurrection.

Christ is shown as holding a lamp in his left hand whilst his right hand is gently knocking on a door. The door its self has rusty hinges and has foliage growing up and around it. It has clearly not been opened for sometime.

There is no outside handle to this door and can only be opened from the person inside. Jesus appears to be knocking quietly with his

head slightly inclined towards the door, as if he is trying to hear a response from within.

The first light of day is starting to show itself in this rather autumnal landscape, this is the Autumn of life for us. Christ never gives up trying even when we are nearing our end. The fallen apples in the bottom right represents fallen man, but can also, in Italian art, represent redemption. Christ is our redemption and salvation.

The lamp is the light of conscience, held by Christ, which illuminates Jesus and the door, representing the soul. This door has clearly remained closed to Jesus for a long time.

The final perspective is that of the viewer. Often in paintings the artist will place the viewer in a more neutral and passive position, away from the main focus of the painting. Here Hunt has placed the viewer directly in an active role, standing, you may not have noticed this at first, in an open door frame. The door which appears to have been opened by the viewer. Christ is not looking at the door he is attempting to knock on, but is directly looking towards the open door, which is in fact, you.

"Behold, I stand at the gate, and knock. If any man shall hear my voice, and open to me the door, I will come in to him, and will sup with him, and he with me".
(Apoc 3:20)

A Christmas Novena of Masses

This Christmas give a spiritual gift by enrolling yourself and your loved ones, in the Novena of Masses offered during the Christmas Octave by the Institute of Christ the King Sovereign Priest in Plymouth.




The novena is offered for both the living and the dead. These Masses are offered for the sanctification and for the salvation of the living as well as for the repose of the souls of those who have gone before us.



The nine consecutive Masses will begin with Midnight Mass and will conclude on 1st January.

Each packet contains an enrollment envelope, a card together its envelope. Please ensure that Canon Smith or Canon Tanner has received it before Midnight Mass.

	INSTITUTE OF CHRIST THE KING SOVEREIGN PRIEST
Please Enrol: _____	
in the Novena of Masses to be offered by the Institute of Christ the King Sovereign Priest.	
Enclosed is my offering	
(Please place this envelope with your offering in the collection or hand to the priest.)	

Your offering supports the apostolates of the Institute of Christ the King in the Diocese of Plymouth.

The Sisters of Lanherne are grateful to the Providence of God who supplies their needs through the generous support of the faithful.

Lanherne Nuns

Sort code: 30-98-76

Account: 45742568

Holy Angels

Collection: £133; Bank Transfers: £310

Torquay

Account Name: ICKSP

Account Details: 40-03-33

Account Number: 12333902

Date	At Lanherne	Canon Tanner
	Mass Offered For:	
27	Richard Thomas RIP Novena Benefactors	Zbigniew Klewiado RIP
28	Richard Thomas RIP Novena	Zbigniew Klewiado RIP
29	Marie, Chris, Julia & Family	Zbigniew Klewiado RIP
30	Oswald & Constance Barry RIP	Zbigniew Klewiado RIP
1	Holy Souls Mgr Wach	Zbigniew Klewiado RIP
2	Holy Souls	Zbigniew Klewiado RIP
3	Holy Souls	Zbigniew Klewiado RIP

Rev. Canon Scott Smith
Chaplain of Lanherne Convent
St Mawgan TR8 4ER
mobile : 07366 321039
lanherne@icksp.org.uk

Safeguarding Reps:
Christina Hunt
Sarah Checkley

At Lanherne Convent

Sundays:

8.30am Low Mass

10am Sung Mass

Monday through Saturday:

8am Mass

Thursdays:

8am and 6.15pm Mass

Confession:

Thursdays: 5.15pm-5.45pm

Fridays and Saturdays after Mass

Rev. Canon Scott Tanner, Prior
House of Saint-Richard-Reynolds
Holy Angels Church, Queensway,
Torquay TQ2 6BP
mobile : 07763 277697
torquay@icksp.org.uk

Safeguarding Rep: Katarzyna Adamiak

At Holy Angels

Sundays:

10 -10.15am Confessions

10.30am Sung Mass

5.30pm Vespers & Benediction

Mon. Tues. Thurs. & Fri.

7.30am Lauds & Meditation

8.30am Mass (Mon, Tues, & Thurs.)

12 noon Mass (Friday)

5.30pm Vespers

6pm Adoration (& Confessions)

7pm Compline

Wednesday Mass at 12 noon

Saturday Mass at 8.30am

Plymouth: Sundays at 8.30am